

Part No. P822601 / P822602

Universal Broadband FR4 Embedded LTE / LPWA Antenna

700 / 750 / 850 / 900 / 1800 / 1900 / 2100 MHz

Supports: Broadband LTE (OCTA-BAND), LTE CAT-M, NB-IoT, SigFox, LoRa, Cellular LPWA, RPMA



*Mirrored version offered as P822602

Universal Broadband FR4 Embedded LTE Antenna

Low Band 700 – 1000 MHz
High Band 1700 - 2700 MHz

KEY BENEFITS

Reduced Costs and Time-to-Market

Standard antenna eliminates design fees and cycle time associated with a custom solution; getting products to market faster.

Greater Flexibility with Unique Form Factors

Ethertronics' technology helps you deliver more advanced ergonomic designs without adverse impact on product performance.

Reliability

Comply with latest RoHS requirements

APPLICATIONS

- Medical applications
- Home automation
- Smart metering
- M2M, Industrial devices
- IoT
- Firstnet
- Automotive applications
- Healthcare Point of Sale
- Tracking
- NB-IoT
- Sigfox
- LoRa
- Cellular LPWA
- RPMA
- LTE CAT-M

Ethertronics' Universal Broadband Embedded LTE/LPWA antenna utilizes Isolated Magnetic Dipole™ (IMD) technology which address the challenges facing today's product designers. IMD's high performance and isolation characteristics offer better connectivity and minimal interference. Mirrored version variant offered as P822602.

Stays in Tune

IMD antenna technology provides superior RF field containment, resulting in less interaction with surrounding components. Ethertronics IMD antennas resist detuning; providing a robust radio link regardless of the usage position

Ethertronics antennas use patented IMD technology in many antenna configurations to provide high performance. IMD antennas requires a smaller design keep-out area, carry lower program development risk which yields a quicker time-to-market, without sacrificing RF performance.

Electrical Specifications

Typical P822601/P822602 performance 140 x 50 mm PCB

| Frequency (MHz) | 698-960 | 1710-2200 | 2500-2700 |
|----------------------|-----------------|-----------|-----------|
| Peak Gain | 2.6 dBi | 4.4 dBi | 3.4 dBi |
| Average Efficiency | 68% | 76% | 52% |
| VSWR Match | < 2.5:1 | | |
| Polarization | Linear | | |
| Power Handling | 2 Watt CW | | |
| Feed Point Impedance | 50 Ω unbalanced | | |

Mechanical Specifications & Ordering Part Number

| Ordering Part # | P822601 | P822602 |
|-----------------|--|------------------|
| Dimensions (mm) | 49.6 x 8.0 x 3.2 | 49.6 x 8.0 x 3.2 |
| Mounting Type | SMT (P&P) | |
| Variant | P822602 : Mirrored version of P822601 | |
| Weight (grams) | 2.63 | |
| Packaging | Tape and Reel | |
| Demo Board | P822601-01 (P822601) P822602-01 (P822602) | |

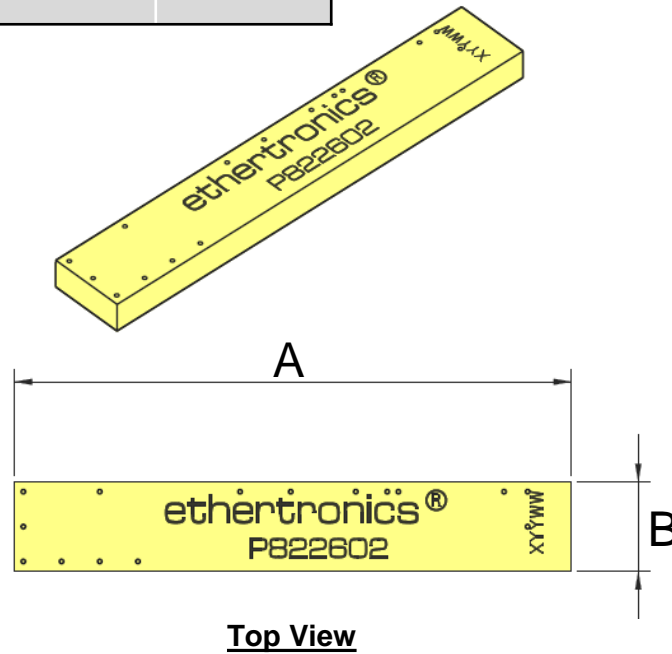


P822601 / P822602 Universal Broadband Embedded LTE Antenna Specifications.
Ethertronics produces a wide variety of standard and custom antennas to meet user needs.

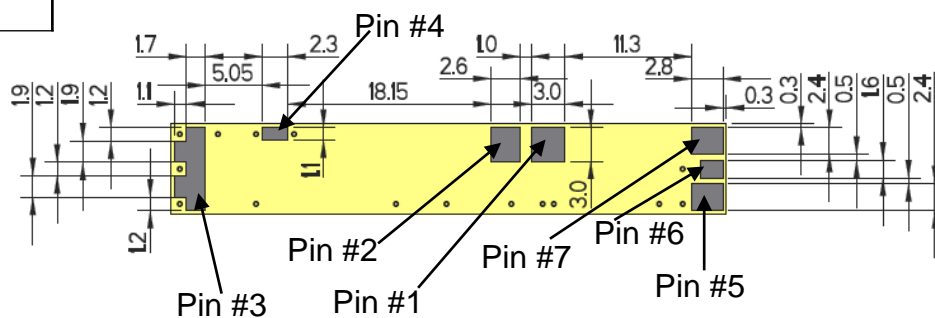
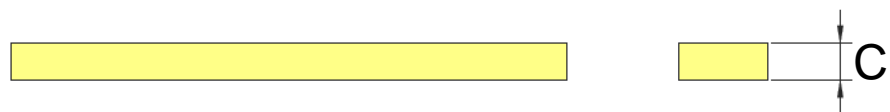
Antenna Dimensions (P822602)

Typical antenna dimensions (mm)

| Part Number | A (mm) | B (mm) | C (mm) |
|-------------|------------|-----------|-----------|
| P822602 | 49.6 ± 0.3 | 8.0 ± 0.2 | 3.2 ± 0.3 |



| Pin# | Description |
|------|------------------|
| 1 | Feed |
| 2 | Ground |
| 3 | Dummy Pad |
| 4 | Low Band Tuning |
| 5 | High Band Tuning |
| 6 | Dummy Pad |
| 7 | Dummy Pad |



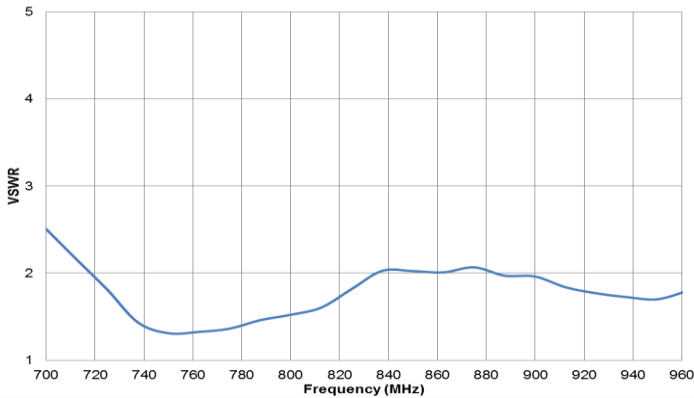


P822601 / P822602 Universal Broadband Embedded LTE Antenna Specifications.
Ethertronics produces a wide variety of standard and custom antennas to meet user needs.

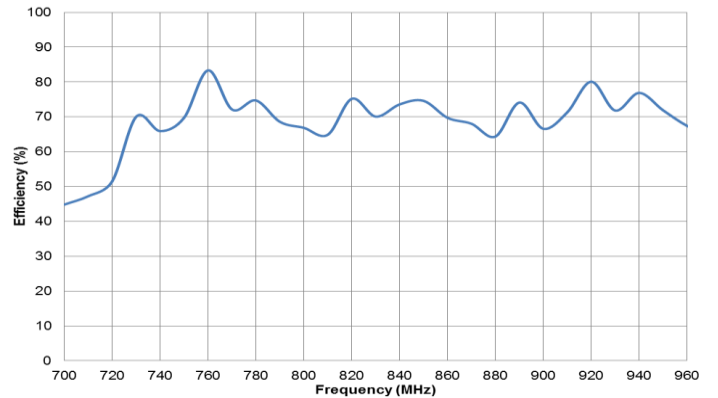
VSWR and Efficiency Plots

Typical P822601/P822602 performance 140 x 50 mm PCB

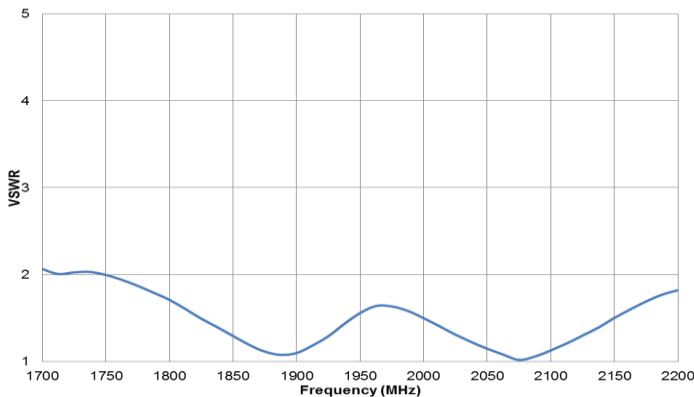
Low Band VSWR



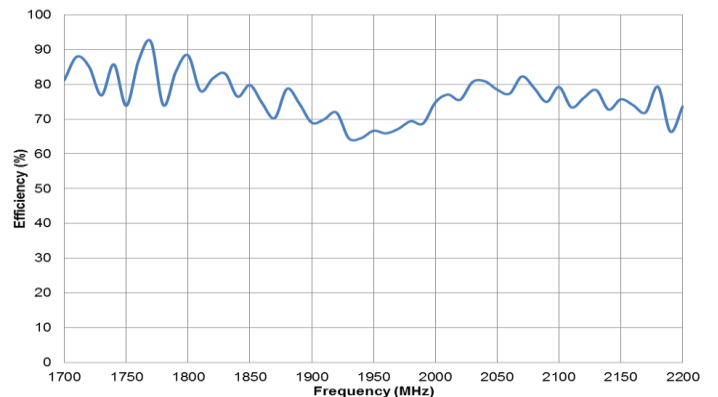
Low Band Efficiency



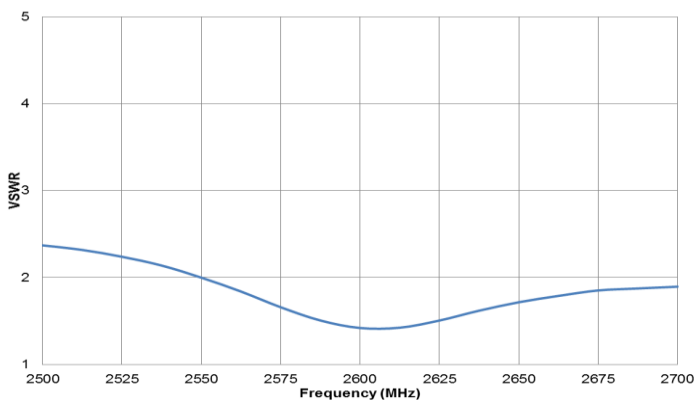
High Band VSWR



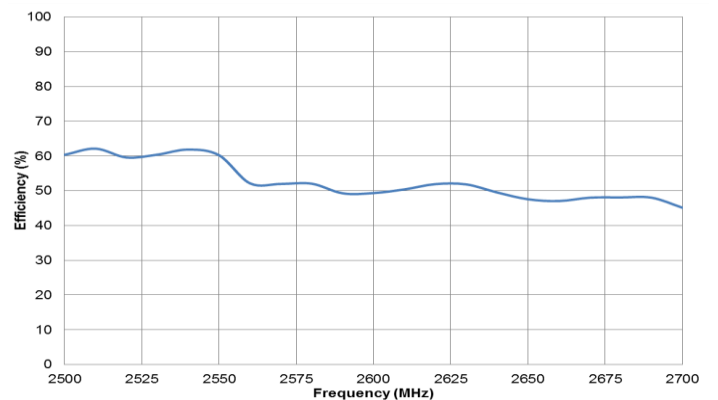
High Band Efficiency



High High Band VSWR



High High Band Efficiency

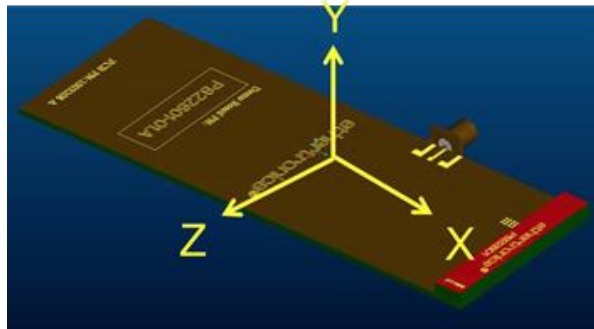




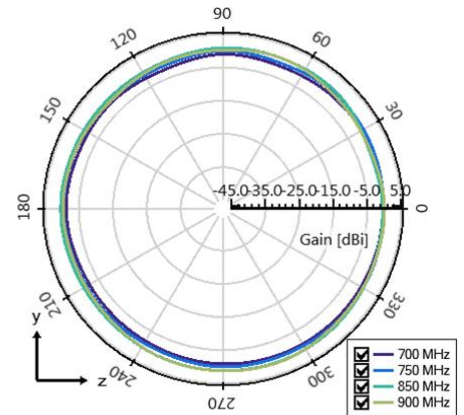
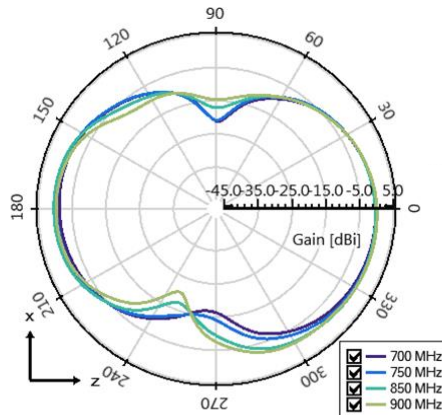
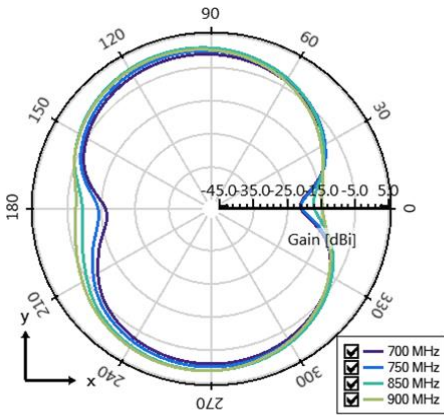
P822601 / P822602 Universal Broadband Embedded LTE Antenna Specifications.
Ethertronics produces a wide variety of standard and custom antennas to meet user needs.

Antenna Radiation Patterns – Low / High Band

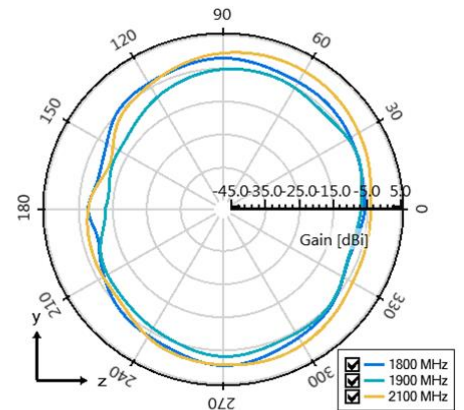
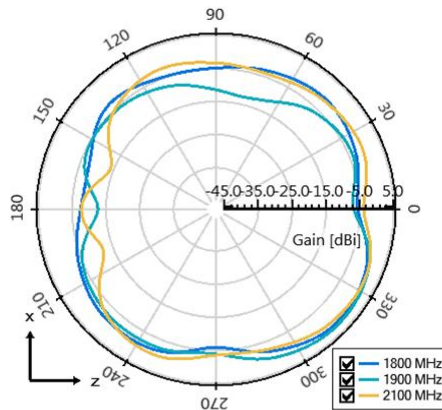
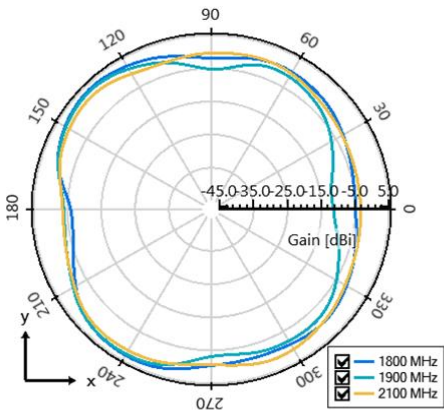
Typical P822601/P822602 performance 140 x 50 mm PCB



Low Band measured at
700, 750, 850, 900 MHz



High Band measured at
1800, 1900, 2100 MHz

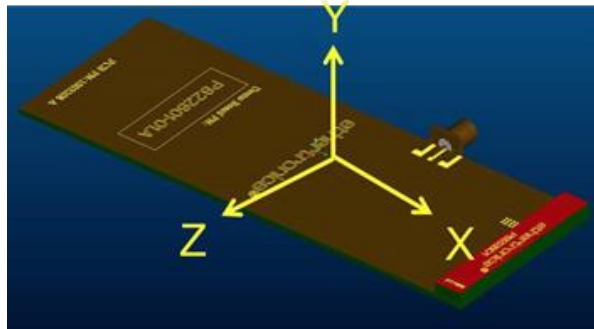




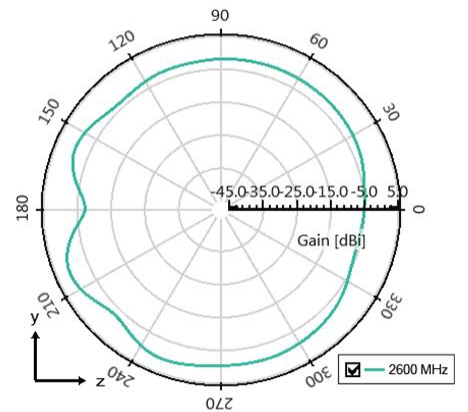
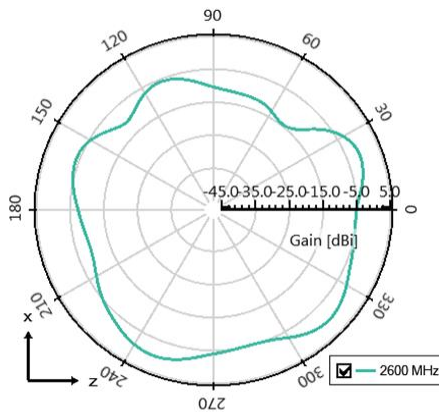
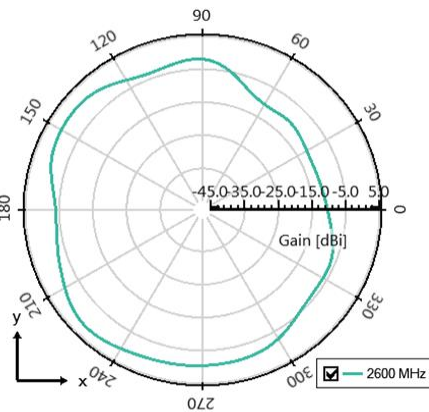
P822601 / P822602 Universal Broadband Embedded LTE Antenna Specifications.
Ethertronics produces a wide variety of standard and custom antennas to meet user needs.

Antenna Radiation Patterns – High High Band

Typical P822601/P822602 performance 140 x 50 mm PCB



High High Band measured at
2600 MHz

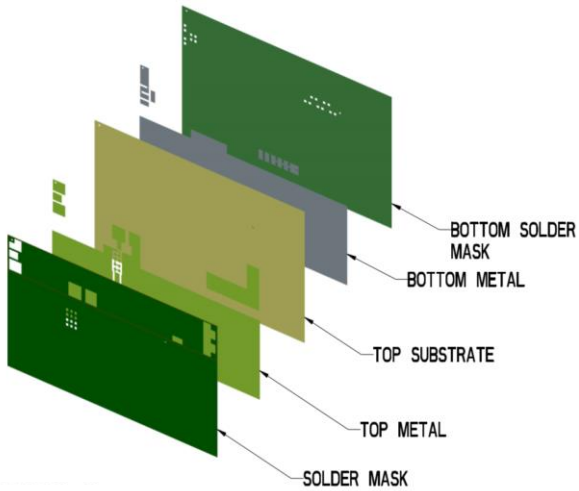




P822601 / P822602 Universal Broadband Embedded LTE Antenna Specifications.
Ethertronics produces a wide variety of standard and custom antennas to meet user needs.

Antenna Layout (P822601)

Typical layout dimensions (mm)



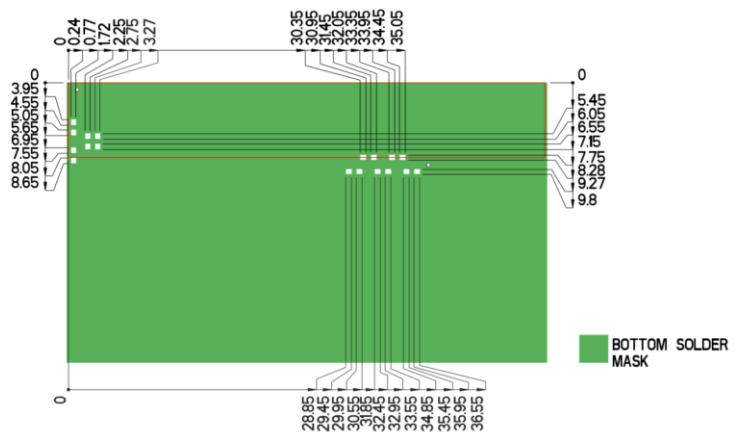
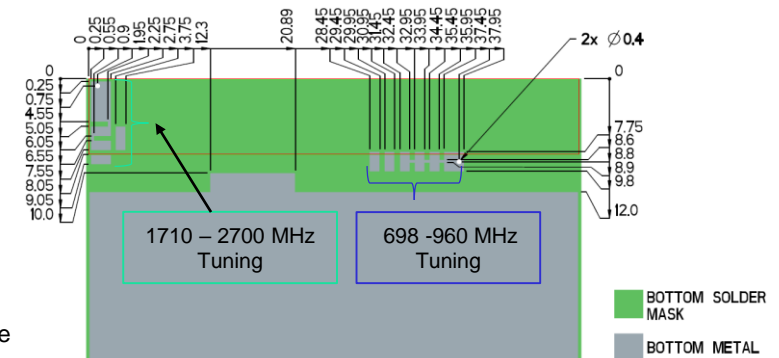
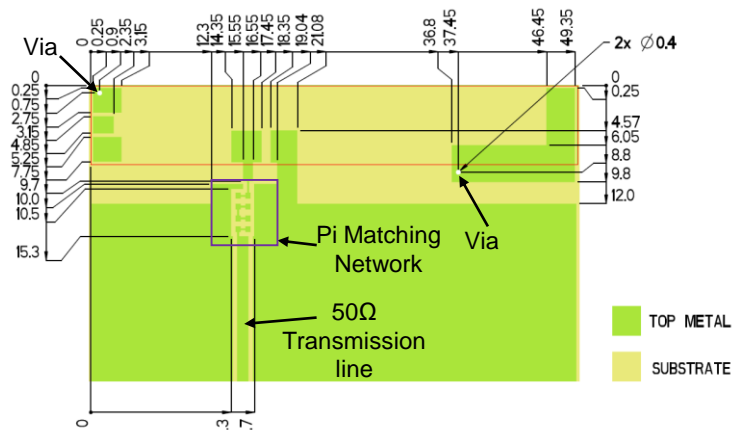
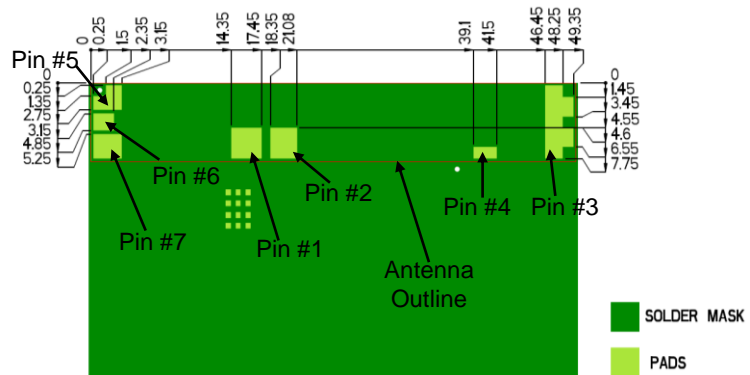
- Additional VIAS: Diam. 0.2mm to be placed around antenna, (no vias on transmission lines).
- Via holes must be covered by solder mask

Pin Descriptions

| Pin# | Description |
|------|------------------|
| 1 | Feed |
| 2 | Ground |
| 3 | Dummy Pad |
| 4 | Low Band Tuning |
| 5 | High Band Tuning |
| 6 | Dummy Pad |
| 7 | Dummy Pad |

*P822602 uses the same layout but mirrored.

Default Pi Matching Network values with instructions can be found under Antenna Matching Network.

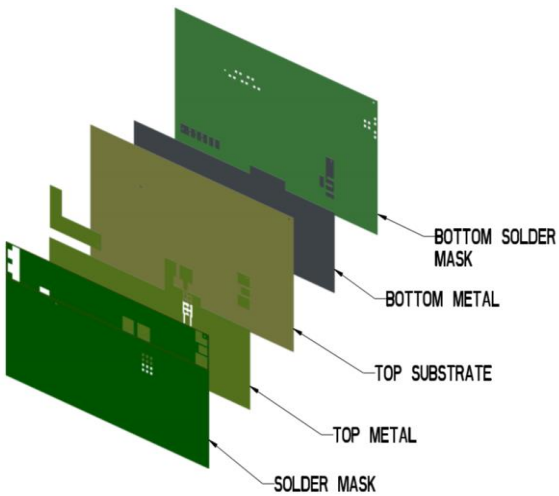




P822601 / P822602 Universal Broadband Embedded LTE Antenna Specifications.
Ethertronics produces a wide variety of standard and custom antennas to meet user needs.

Antenna Layout (P822602)

Typical layout dimensions (mm)



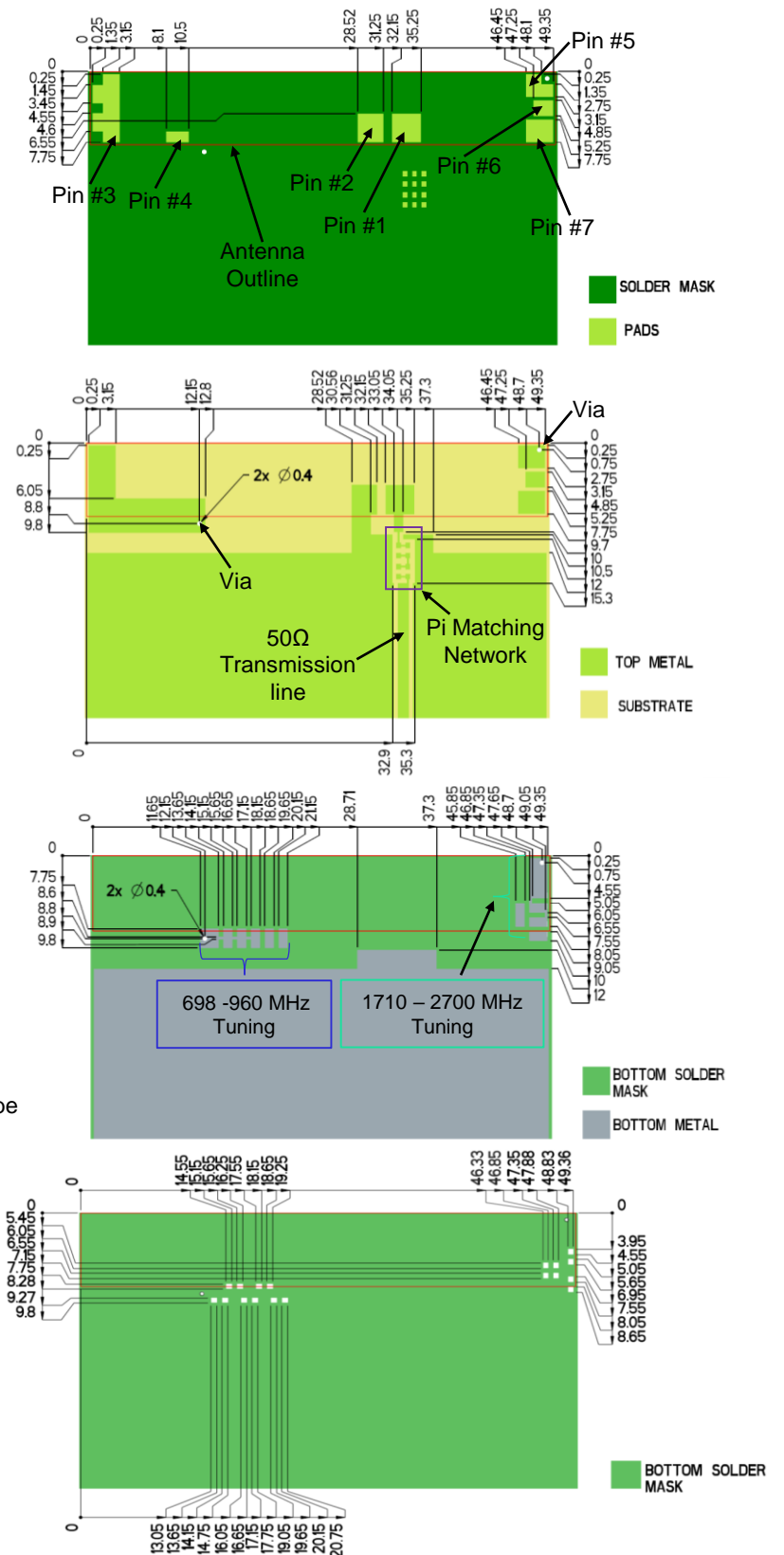
- Additional VIAS : Diam. 0.2mm to be placed around antenna, (no vias on transmission lines).
- Via holes must be covered by solder mask

Pin Descriptions

| Pin# | Description |
|------|------------------|
| 1 | Feed |
| 2 | Ground |
| 3 | Dummy Pad |
| 4 | Low Band Tuning |
| 5 | High Band Tuning |
| 6 | Dummy Pad |
| 7 | Dummy Pad |

*P822601 uses the same layout but mirrored.

Default Pi Matching Network values with instructions can be found under Antenna Matching Structure.

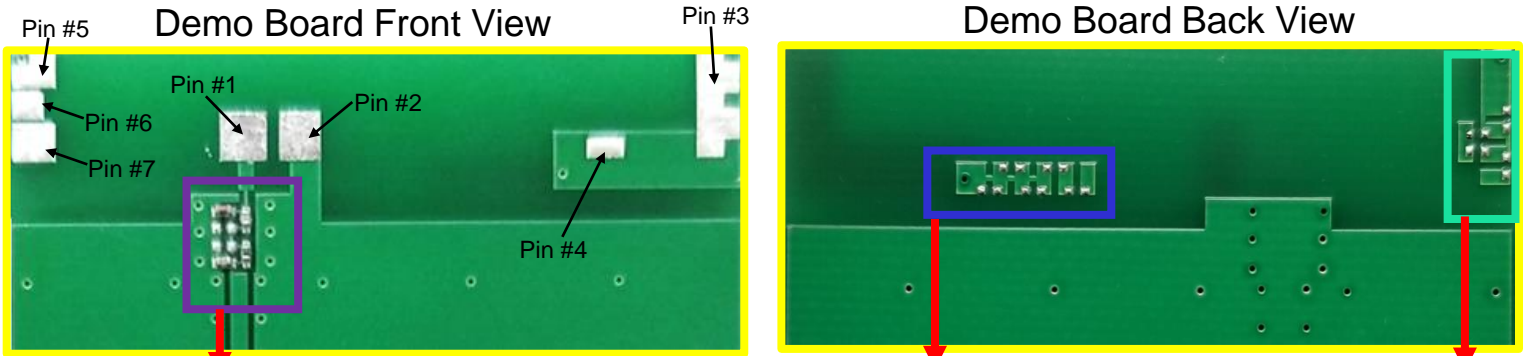




P822601 / P822602 Universal Broadband Embedded LTE Antenna Specifications.
Ethertronics produces a wide variety of standard and custom antennas to meet user needs.

Antenna Matching Structure (P822601)

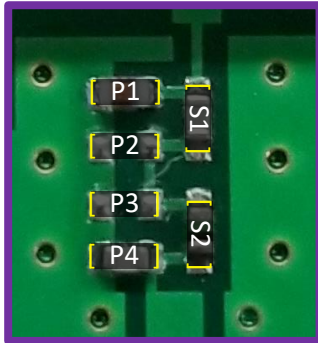
Typical matching values on 140 x 50 mm PCB



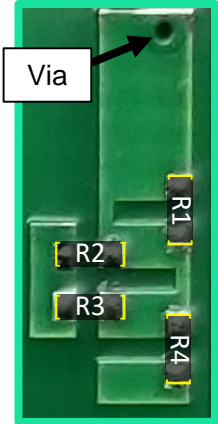
Antenna Matching

698-960 MHz Tuning

1710-2700 MHz Tuning

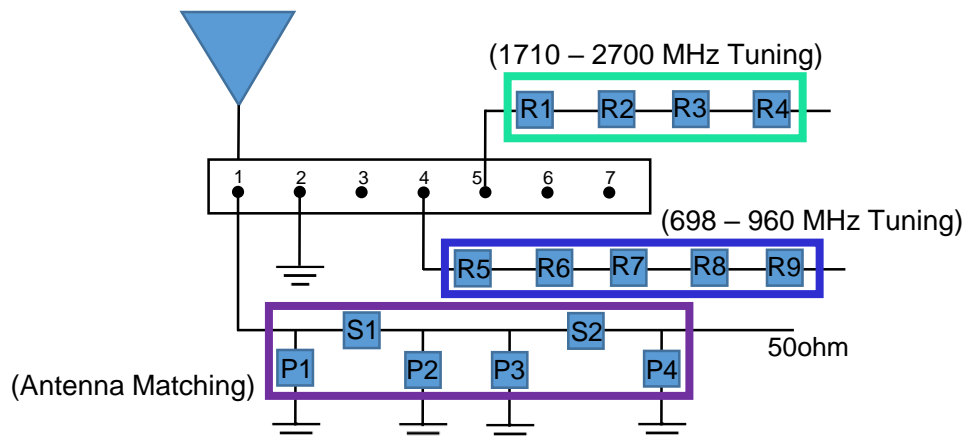


(Antenna Matching):
pads are directly inline with
the antenna feed trace.



Pin Descriptions

| Pin# | Description |
|------|------------------|
| 1 | Feed |
| 2 | Ground |
| 3 | Dummy Pad |
| 4 | Low Band Tuning |
| 5 | High Band Tuning |
| 6 | Dummy Pad |
| 7 | Dummy Pad |



*P822602 uses same matching values

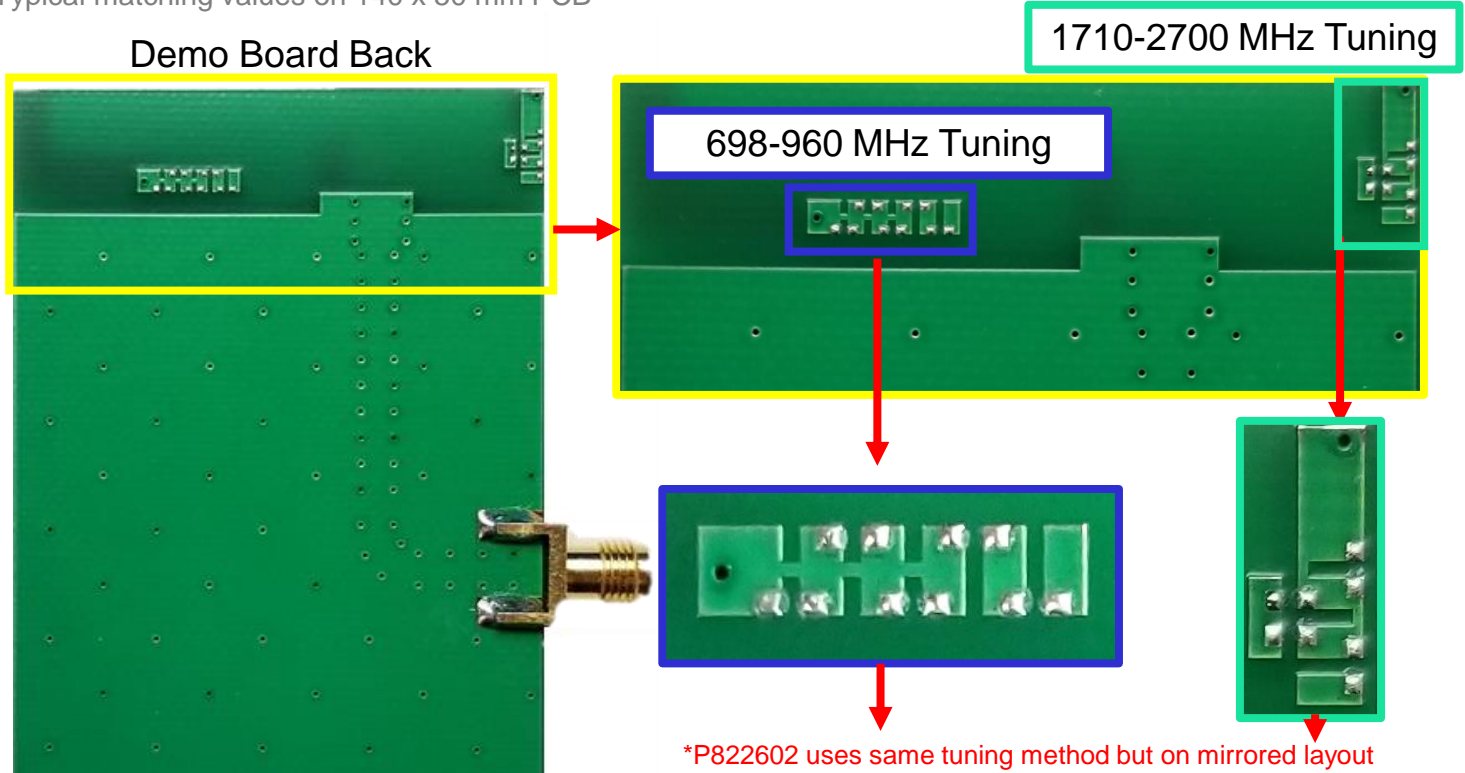
| | P1 | S1 | P2 | P3 | S2 | P4 | R1-R4 | R5-R9 |
|-------------------------|-------|----------|-----|-----|---------|---------|-------|-------|
| Default Matching | 24nH | 2.4pF | DNI | DNI | 1.0nH | 0.3pF | DNI | DNI |
| Tolerance | ± 20% | ± 0.25pF | N/A | N/A | ± 0.3nH | ± 0.1pF | N/A | N/A |



P822601 / P822602 Universal Broadband Embedded LTE Antenna Specifications.
Ethertronics produces a wide variety of standard and custom antennas to meet user needs.

Antenna Matching Structure (P822601)

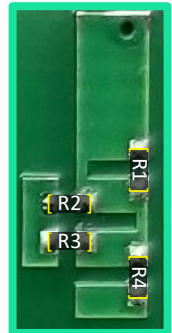
Typical matching values on 140 x 50 mm PCB



Ex. Tuning Layout

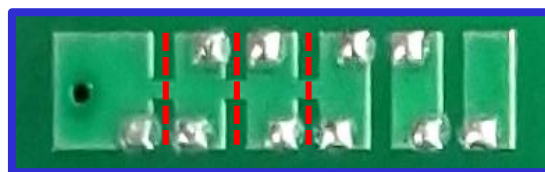
(1) Shift Frequency Lower (Adding Components)

*Bridging gaps with 0 ohm resistors shifts resonant frequency lower



(2) Shift Frequency Higher (Cut Bridge Traces)

*Cut Trace between pads shifts resonant frequency higher

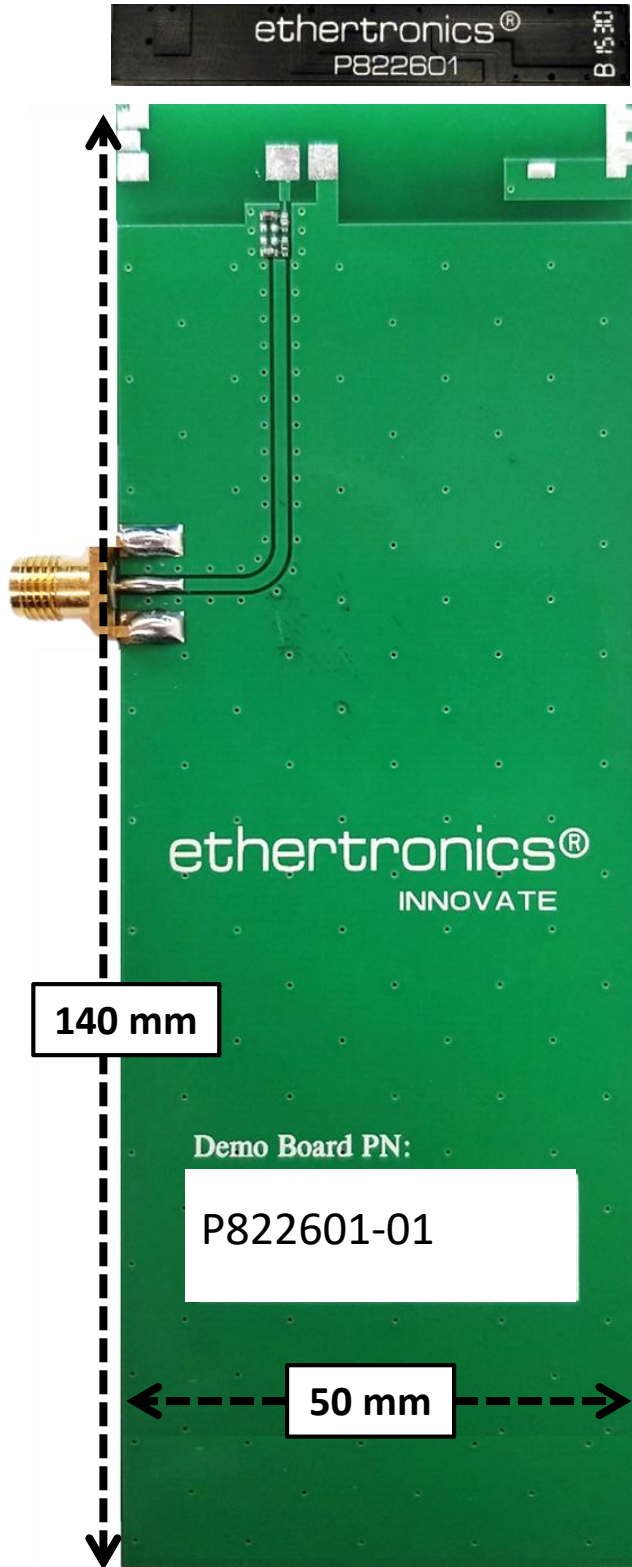




P822601 / P822602 Universal Broadband Embedded LTE Antenna Specifications.
Ethertronics produces a wide variety of standard and custom antennas to meet user needs.

Antenna Demo Board (P822601/P822602)

Demo Board Front View





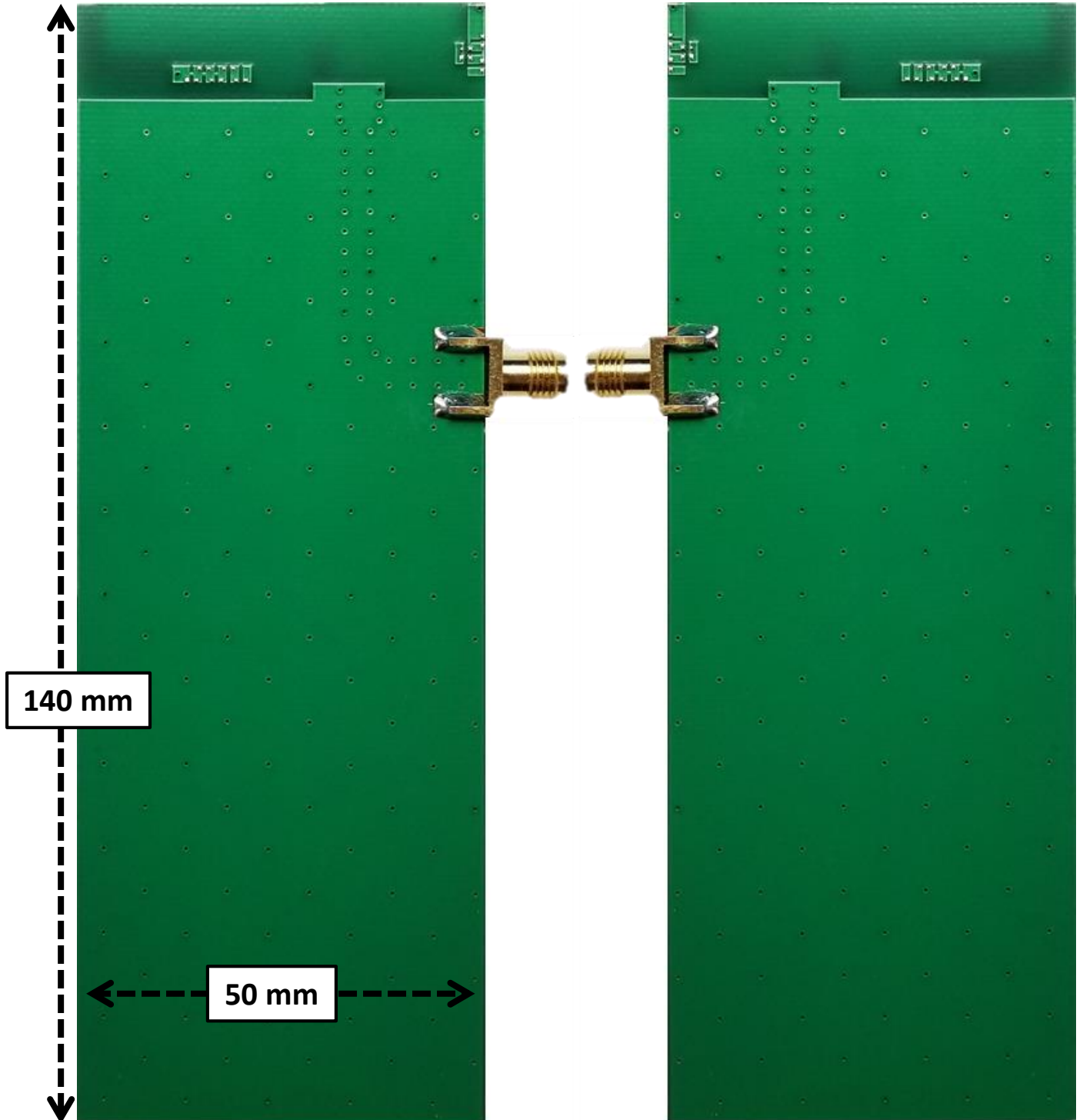
P822601 / P822602 Universal Broadband Embedded LTE Antenna Specifications.
Ethertronics produces a wide variety of standard and custom antennas to meet user needs.

Antenna Demo Board (P822601/P822602)

Demo Board Back View (mm)

P822601-01

P822602-01

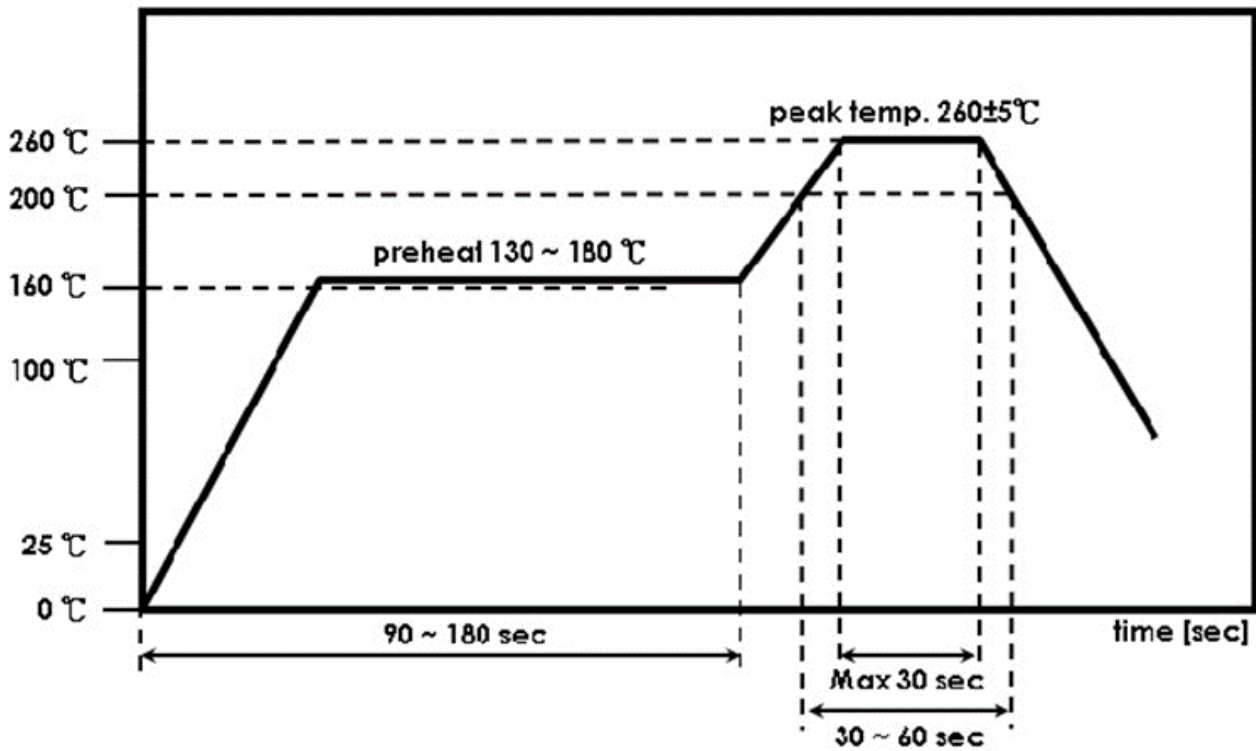




P822601 / P822602 Universal Broadband Embedded LTE Antenna Specifications.
Ethertronics produces a wide variety of standard and custom antennas to meet user needs.

Recommended Reflow Soldering Profile

The recommended method for soldering the antenna to the board is forced convection reflow soldering. The following suggestions provide information on how to optimize the reflow process for the FR4 antenna:



*Adjust the reflow duration to create good solder joints without raising the antenna temperature beyond the allowed maximum of 260° C.