

M5i.33xx-x16 high performance 12 bit digitizer with 6.4 GS/s

- Up to 6.4 GS/s on one or 3.2 GS/s on two channels
- Up to 2 GHz signal bandwidth
- Ultra Fast PCI Express x16 Gen3 interface
- Streaming Speed up to 12.8 GByte/s (6.4 GS/s)
- 4 input ranges: ± 200 mV up to ± 2.5 V
- 2 GSamples (4 GByte) on-board memory
- 8 GSamples (16 GByte) optional on-board memory
- Features: Single-Shot, Streaming, Multiple Recording, Timestamps
- Direct data transfer to CUDA GPU using SCAPP option

Speed	SNR	ENOB
6.4 GS/s	54.0 dB	8.7 ENOB
3.2 GS/s	54.5 dB	8.8 ENOB

SCAPP
Spectrum's CUDA Access – Parallel Processing



- PCIe x16 Gen 3 Interface
- Sustained streaming mode up to 12.8 GByte/s**
- Included advanced cooling with dual cooling fans for proper airflow

Operating Systems	Recommended Software	Drivers
<ul style="list-style-type: none"> • Windows 7 (SP1), 8, 10, 11 Server 2008 R2 and newer • Linux Kernel 3.x, 4.x, 5.x • Windows/Linux 32 and 64 bit 	<ul style="list-style-type: none"> • Visual C++, Delphi, C++ Builder, GNU C++, VB.NET, C#, Java, Python, Julia • SBench 6 	<ul style="list-style-type: none"> • MATLAB • LabVIEW • IVI

Model	Resolution	1 channel	2 channels	Bandwidth
M5i.3337-x16	12 Bit	6.4 GS/s	3.2 GS/s	2 GHz
M5i.3330-x16	12 Bit	3.2 GS/s	-	2 GHz

General Information

The high-performance M5i.33xx series gives outstanding performance with the combination of high resolution, high samplingrate, high bandwidth and the world fastest streaming speed for Digitizers. On selected systems the card can stream continuously one channel with 6.4 GS/s and 12 bit resolution to CPU or GPU. The M5i series is based on the common API from Spectrum and uses the same software interface like all Spectrum products released since 2005.

*Some x16 PCIe slots are for the use of graphic cards only and can't be used for other cards. **Throughput measured with a PCIe root complex supporting a TLP size of 512 bytes.

Software Support

Windows drivers

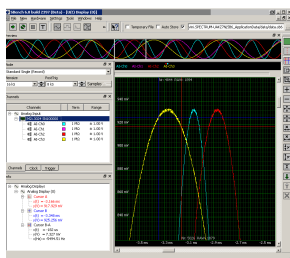
The cards are delivered with drivers for Windows 7, Windows 8, Windows 10 and Windows 11 (each 32 bit and 64 bit). Programming examples for Visual C++, C++ Builder, Delphi, Visual Basic, VB.NET, C#, Python, Java, Julia and IVI are included.

Linux Drivers



All cards are delivered with full Linux support. Pre compiled kernel modules are included for the most common distributions like Fedora, Suse, Ubuntu LTS or Debian. The Linux support includes SMP systems, 32 bit and 64 bit systems, versatile programming examples for GNU C++, Python and Julia, as well as the possibility to get the kernel driver sources for your own compilation.

SBench 6



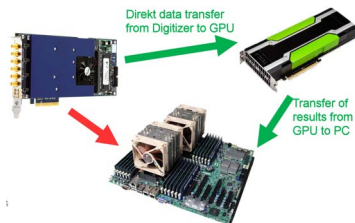
A base license of SBench 6, the easy-to-use graphical operating software for Spectrum cards, is included in the delivery. The base license makes it possible to test the card, display acquired data and make some basic measurements. It's a valuable tool for checking the card's performance and assisting with the unit's initial

setup. The cards also come with a demo license for the SBench 6 professional version. This license gives the user the opportunity to test the additional features of the professional version with their hardware. The professional version contains several advanced measurement functions, such as FFTs and X/Y display, import and export utilities as well as support for all acquisition modes including data streaming. Data streaming allows the cards to continuously acquire data and transfer it directly to the PC RAM or hard disk. SBench 6 has been optimized to handle data files of several GBytes. SBench 6 runs under Windows as well as Linux (KDE, GNOME and Unity) operating systems. A test version of SBench 6 can be downloaded directly over the internet and can run the professional version in a simulation mode without any hardware installed. Existing customers can also request a demo license for the professional version from Spectrum. More details on SBench 6 can be found in the SBench 6 data sheet.

Third-party products

Spectrum supports the most popular third-party software products such as LabVIEW or MATLAB. All drivers come with detailed documentation and working examples are included in the delivery.

SCAPP – CUDA GPU based data processing



For applications requiring high performance signal and data processing Spectrum offers SCAPP (Spectrum's CUDA Access for Parallel Processing). The SCAPP SDK allows a direct link between Spectrum digitizers, AWGs or Digital Data Acquisition

Cards and CUDA based GPU cards. Once in the GPU users can harness the processing power of the GPU's multiple (up to 10000) processing cores and large (up to 48 GB) memories. SCAPP uses an RDMA (Linux only) process to send data at the full PCIe transfer speed to and from the GPU card. The SDK includes a set of examples for interaction between the Spectrum card and the GPU card and another set of CUDA parallel processing examples with easy building blocks for basic functions like filtering, averaging, data demultiplexing, data conversion or FFT. All the software is based on

C/C++ and can easily be implemented, expanded and modified with normal programming skills.

Hardware features and options

PCI Express x16



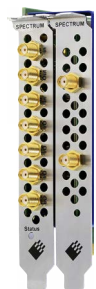
The M5i series cards use a PCI Express x16 Gen 3 connection. They can be used in PCI Express x16 slots with hosts supporting Gen1, Gen2, Gen3 or Gen4.

Gen3 or Gen4 is needed to get full performance. The maximum sustained data transfer rate is more than 12.8 GByte/s per slot on systems with a PCIe payload size of 512. Physically supported slots that are electrically connected with less lanes can also be used with the M5i series cards, but with reduced data transfer rates.

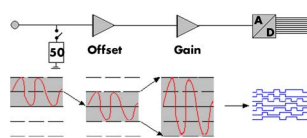
Connections

The cards are equipped with SMA connectors for the analog signals as well as for clock input and output, trigger input and four multi-function I/O connectors (X0, X1, X2, X3). These multi-function connectors can be individually programmed to perform different functions:

- Trigger output
- Status output (armed, triggered, ready, ...)
- Synchronous digital inputs, being stored inside the analog data samples
- Asynchronous I/O lines
- Logic trigger inputs



Input Amplifier

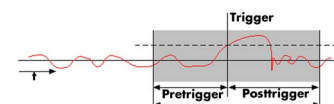


The analog inputs can be adapted to real world signals using a wide variety of settings that are individual for each channel. By using software commands one can select a matching input range and the signal offset can be compensated.

Automatic on-board calibration

All of the channels are calibrated in factory before the board is shipped. To compensate for different variations like PC power supply, temperature and aging, the software driver provides routines for an automatic onboard offset and gain calibration of all input ranges. All the cards contain a high precision on-board calibration reference.

Ring buffer mode



The ring buffer mode is the standard mode of all oscilloscope instruments. Digitized data is continuously written into a ring memory until a trigger event is detected. After the trigger, post-trigger samples are recorded and pre-trigger samples can also be stored. The number of pre-trigger samples available simply equals the total ring memory size minus the number of post trigger samples.

FIFO mode

The FIFO or streaming mode is designed for continuous data transfer between the digitizer card and the PC memory. When mounted in a PCI Express x16 Gen 3 interface read streaming speeds of up to 12.8 GByte/s are possible. The maximum speed has been measured using a state-of-the-art motherboard with a PCIe payload size of 512. The control of the data stream is done automatically by the driver on interrupt request basis. The complete installed on-board memory is used to buffer the data, making the continuous streaming process extremely reliable.

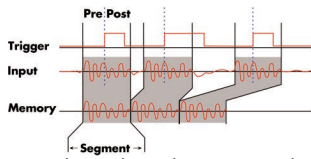
Channel trigger

The digitizers offer a wide variety of trigger modes. These include a standard triggering mode based on a signals level and slope, like that found in most oscilloscopes. It is also possible to define a window mode, with two trigger levels, that enables triggering when signals enter or exit the window. Each input has its own trigger circuit which can be used to setup conditional triggers based on logical AND/OR patterns. All trigger modes can be combined with a re-arming mode for accurate trigger recognition even on noisy signals.

External trigger input

All boards can be triggered using an external analog or digital signal. The external trigger input has one comparator that can be used for standard edge and level triggers.

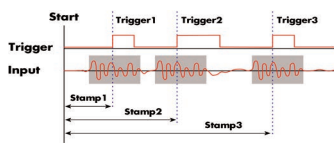
Multiple Recording



The Multiple Recording mode allows the recording of several trigger events with an extremely short re-arming time. The hardware doesn't need to be restarted in between.

The on-board memory is divided in several segments of the same size. Each of them is filled with data if a trigger event occurs. Pre- and posttrigger of the segments can be programmed. The number of acquired segments is only limited by the used memory and is unlimited when using FIFO mode.

Timestamp



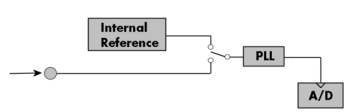
The timestamp function writes the time positions of the trigger events in an extra memory. The timestamps are relative to the start of recording, a defined zero time, externally synchronized to a radio clock, an IRIG-B or a GPS receiver.

Using the external synchronization gives a precise time relation for acquisitions of systems on different locations.

External clock input and output

Using a dedicated connector a sampling clock can be fed in from an external system. Additionally it's also possible to output the internally used sampling clock on a separate connector to synchronize external equipment to this clock.

Reference clock



The option to use a precise external reference clock (normally 10 MHz) is necessary to synchronize the instrument for high-quality measurements with external equipment (like a signal source). It's also possible to enhance the quality of the sampling clock in this way. The driver automatically generates the requested sampling clock from the fed in reference clock.

External Amplifiers



For the acquisition of extremely small voltage levels with a high bandwidth a series of external amplifiers is available. Each of the one channel amplifiers is working with a fixed input impedance and allows - depending on the bandwidth - to select different amplification levels between x10 (20

dB) up to x1000 (60 dB). Using the external amplifiers of the SPA series voltage levels in the μV and mV area can be acquired.

Technical Data



Only figures that are given with a maximum reading or with a tolerance reading are guaranteed specifications. All other figures are typical characteristics that are given for information purposes only. Figures are valid for products stored for at least 2 hours inside the specified operating temperature range, after a 30 minute warm-up, after running an on-board calibration and with proper cooled products. All figures have been measured in lab environment with an environmental temperature between 20°C and 25°C and an altitude of less than 100 m.

Analog Inputs

Resolution		12 bit
Input Range	software programmable	±200 mV, ±500 mV, ±1 V, ±2.5 V
Input Type	software programmable	Single-ended
Input Offset (single-ended)	software programmable	programmable to ±100% of input range in steps of 1%
ADC Differential non linearity (DNL)	ADC only	±0.3 LSB
ADC Integral non linearity (INL)	ADC only	±2.5 LSB
Offset error (full speed), DC signal	after warm-up and calibration	< 0.5% of range
Gain error (full speed), DC signal	after warm-up and calibration	< 0.5% of reading
Offset temperature drift	after warm-up and calibration	TBD
Gain temperature drift	after warm-up and calibration	TBD
Crosstalk: Signal 10 MHz, 50 Ω	any range, any channel	< -110 dB
Crosstalk: Signal 100 MHz, 50 Ω	any range, any channel	< -103 dB
Analog Input impedance	fixed	50 Ω
Analog input coupling	fixed	DC
Over voltage protection		5 Vrms (27 dBm), max ±7.5 V peak
Anti-Aliasing Filter (standard)	333x	fixed 2 GHz
Channel selection (single-ended inputs)	software programmable	1 or 2 channels (maximum is model dependent)
Calibration	Internal	Self-calibration is done on software command and corrects against the on-board references. Self-calibration should be issued after warm-up time.
Calibration	External	External calibration calibrates the on-board references used in self-calibration. All calibration constants are stored in non-volatile memory. A yearly external calibration is recommended.

	Input Range	M5i.3330-x16 M5i.3337-x16
lower bandwidth limit	all ranges	0 Hz (DC)
-3 dB bandwidth (minimum)	all ranges	2.0 GHz
-3 dB bandwidth (typical)	all ranges	2.2 GHz
Flatness within ±0.5 dB	all ranges	1.1 GHz

Trigger

Available trigger modes	software programmable	Channel Trigger, External, Software, Window, Re-Arm, Or/And, Delay
Channel trigger level resolution	software programmable	12 bit
Trigger edge	software programmable	Rising edge, falling edge or both edges
Trigger delay	software programmable	32 up to (256 GS - 32) in steps of 32
Trigger holdoff (for Multi)	software programmable	32 up to (256 GS - 32) in steps of 32
Multi re-arming time	1 channel mode 2 channel mode	288 samples 144 samples
Pretrigger at Multi, FIFO	software programmable	32 up to (64 kSamples / channels) in steps of 32
Posttrigger	software programmable	32 up to (256 GS - 32) in steps of 32
Memory depth	software programmable	64 up to (Installed memory / channels) in steps of 32
Multiple Recording segment size	software programmable	64 up to (Installed memory / channels) in steps of 32
Internal/External trigger accuracy		1 sample
Timestamp modes	software programmable	Standard, Startreset, external reference clock (e.g. PPS from GPS, IRIG-B)
Data format		Std., Startreset: 64 bit counter, increments with sample clock (reset manually or on start) RefClock: 24 bit upper counter (increment with RefClock) 40 bit lower counter (increments with sample clock, reset with RefClock)
Extra data	software programmable	none, acquisition of X0/X1/X2/X3 inputs at trigger time, trigger source (for OR trigger)
Size per stamp		128 bit = 16 bytes
External trigger		Ext
External trigger type		single level comparator
External trigger impedance	software programmable	50 Ω or 3k Ω
External trigger input level		±5 V
External trigger over voltage protection	50 Ω termination 3k Ω termination	±20 V 7 Vrms
External trigger sensitivity (minimum required signal swing)		200 mVpp
External trigger level	software programmable	±5 V with a stepsize of 10 mV
External trigger bandwidth	50 Ω 3 kΩ 10 kΩ	TBD TBD n.a.
Minimum external trigger pulse width		≥ 2 samples
Resulting max detectable trigger frequency		[Current Samplerate]/2
		X0, X1, X2, X3 3.3V LVTTTL logic inputs For electrical specifications refer to „Multi Purpose I/O lines“ section.
		DC to 125 MHz n.a. DC to 125 MHz
		≥ 2 samples
		[Current Samplerate]/2

Multi Purpose I/O lines (front-plate)

Number of multi purpose lines		four, named X0, X1, X2, X3
Input: available signal types	software programmable	Logic Trigger, Asynchronous Digital-In, Synchronous Digital-In, Timestamp Reference Clock
Input: impedance	software programmable	10 k Ω to 3.3 V or 50 Ω to GND
Input: maximum voltage level		-0.5 V to +4.0 V
Input: signal levels		3.3 V LVTTTL
Input: bandwidth		125 MHz
Output: available signal types	software programmable	Asynchronous Digital-Out, Trigger Output, Run, Arm, System Clock
Output: impedance		50 Ω
Output: signal levels		3.3 V LVTTTL
Output: type		3.3V LVTTTL, TTL compatible for high impedance loads
Output: drive strength		Capable of driving 50 Ω loads, maximum drive strength \pm 48 mA
Output: internal update rate		sampling clock
Output: min high/low time		4 ns
Output: max signal frequency		125 MHz

Clock

Clock Modes	software programmable	internal PLL, external reference clock
Internal clock accuracy		$\leq \pm 1$ ppm
Clock setup range		base frequency or divided base frequency
Clock setup base frequencies	M5i.3330/M5i.3337	6.4 GS/s
Clock setup divider		power of 2: 2, 4, 8, 16, 32, ..., 524288, 1048576
Clock setup examples	M5i.3330/M5i.3337	6.4 GS/s, 3.2 GS/s, 1.6 GS/s, 800 MS/s, ..., 6.1 kS/s
External reference cloc range	software programmable	≥ 10 MHz and ≤ 100 MHz
External reference clock input impedance		50 Ω fixed
External reference clock input coupling		AC coupling
External reference clock input edge		Rising edge
External reference clock input type		Single-ended, sine wave or square wave
External reference clock input swing	min max	200 mVpp 3 Vpp
External reference clock input max DC voltage		± 10 V (with max 3.0 V difference between low and high level)
External reference clock input duty cycle requirement		45% to 55%
Clock setup granularity when using reference clock		divider: maximum sampling rate divided by: TBD
Internal reference clock output type		Single-ended, ± 1.5 V
Internal reference clock output frequency		TBD
Channel to channel skew on one card		< TBD ps (typical)

Connectors

Analog Inputs (one for each single-ended input)	SMA female	Cable-Type: Cab-3mA-xx-xx
Trigger Input	SMA female	Cable-Type: Cab-3mA-xx-xx
Clock Input	SMA female	Cable-Type: Cab-3mA-xx-xx
Clock Output	SMA female	Cable-Type: Cab-3mA-xx-xx
Multi Purpose I/O	SMA female	Cable-Type: Cab-3mA-xx-xx
Power Connector	PCIe 6-pin power +12V+GND	Must be supplied by PC power supply

Connection Cycles

All connectors have an expected lifetime as specified below. Please avoid to exceed the specified connection cycles or use connector savers.

SMA connector	500 connection cycles
PCIe connector	50 connection cycles
PCIe power connector	30 connection cycles

Environmental and Physical Details

Dimension (Single Card including rear fans)		L x H x W: 241 mm x 107 mm x 40 mm (double slot width)
Weight	maximum	780 grams
Warm up time		30 minutes (running acquisition at full speed)
Operating temperature		0°C to 50°C
Storage temperature		-10°C to 70°C
Humidity		10% to 90%
Dimension of packing	1 card	470 mm x 250 mm x 130 cm
Volume weight of packing	1 card	4 kgs

PCI Express specific details

PCIe connector type		x16 Generation 3
PCIe slot compatibility (physical)		x16
PCIe slot compatibility (electrical)		x1, x2, x4, x8, x16 with Generation 1, Generation 2, Generation 3, Generation 4
Sustained streaming mode (Card-to-System):		> 12.8 GB/s (measured with a chipset supporting a TLP size of 512 bytes, using PCIe x16 Gen 3)
PCIe max card controller TLP		512 (lower values will limit maximum streaming speed)

Certification, Compliance, Warranty

EMC Immunity
 EMC Emission
 Product warranty
 Software and firmware updates

Compliant with CE Mark
 Compliant with CE Mark
 5 years starting with the day of delivery
 Life-time, free of charge

Power Consumption

	Bus Connector		Power Connector*	
	3.3V	12 V	12 V	Total
M5i.3337-x16	TBD A	n.a.	TBD A	TBD W
M5i.3330-x16	TBD A	n.a.	TBD A	TBD W

*A separate power connection to the card is mandatory. The card cannot be powered solely by the PCIe bus connector

MTBF

MTBF TBD hours

Dynamic Parameters

Input Range	M5i.3330-x16 and M5i.3337-x16 - 12 Bit 6.4 GS/s											
	±200 mV						±500 mV					
	10 MHz	40 MHz	70 MHz	240 MHz	600 MHz	1.2 GHz	10 MHz	40 MHz	70 MHz	240 MHz	600 MHz	1.2 GHz
THD (typ)	-60.2 dB	-59.0 dB	-58.4 dB	-58.4 dB	-51.6 dB	-52.9 dB	-55.2 dB	-54.0 dB	-53.8 dB	-54.0 dB	-52.0 dB	-53.3 dB
SNR (typ)	53.6 dB	53.1 dB	53.4 dB	52.8 dB	51.9 dB	50.1 dB	54.0 dB	53.4 dB	53.6 dB	53.3 dB	52.0 dB	50.0 dB
SFDR (typ), excl. harm.	63.3 dB	61.6 dB	62.6 dB	60.9 dB	58.1 dB	54.3 dB	62.2 dB	60.8 dB	61.8 dB	59.1 dB	56.4 dB	53.2 dB
SFDR (typ), incl. harm.	61.3 dB	59.4 dB	58.7 dB	60.0 dB	52.7 dB	53.3 dB	55.7 dB	54.3 dB	54.0 dB	54.8 dB	54.3 dB	53.2 dB
SINAD/THD+N (typ)	52.7 dB	52.1 dB	52.2 dB	51.7 dB	48.7 dB	48.6 dB	52.5 dB	50.7 dB	50.7 dB	50.6 dB	49.4 dB	48.7 dB
ENOB (SINAD)	8.5 LSB	8.4 LSB	8.4 LSB	8.3 LSB	7.8 LSB	7.8 LSB	8.3 LSB	8.1 LSB	8.1 LSB	8.1 LSB	7.9 LSB	7.8 LSB
ENOB (SNR)	8.6 LSB	8.5 LSB	8.6 LSB	8.5 LSB	8.3 LSB	8.0 LSB	8.7 LSB	8.6 LSB	8.6 LSB	8.6 LSB	8.3 LSB	8.0 LSB

Input Range	M5i.3330-x16 and M5i.3337-x16 - 12 Bit 6.4 GS/s											
	±1 V						±2.5 V					
	10 MHz	40 MHz	70 MHz	240 MHz	600 MHz	1.2 GHz	10 MHz	40 MHz	70 MHz	240 MHz	600 MHz	1.2 GHz
THD (typ)	-62.1 dB	-60.0 dB	-59.7 dB	-59.3 dB	-56.6 dB	-57.1 dB	-54.7 dB	-53.6 dB	-53.3 dB	-53.3 dB	-52.9 dB	-53.7 dB
SNR (typ)	54.3 dB	53.6 dB	54.1 dB	53.8 dB	52.7 dB	50.4 dB	54.0 dB	53.6 dB	53.5 dB	53.4 dB	51.9 dB	49.9 dB
SFDR (typ), excl. harm.	63.8 dB	60.3 dB	62.1 dB	61.9 dB	58.1 dB	54.3 dB	62.0 dB	60.9 dB	60.6 dB	58.8 dB	55.7 dB	53.0 dB
SFDR (typ), incl. harm.	63.8 dB	60.0 dB	60.3 dB	61.7 dB	58.0 dB	54.3 dB	55.1 dB	53.9 dB	53.5 dB	54.2 dB	54.4 dB	53.0 dB
SINAD/THD+N (typ)	53.6 dB	52.7 dB	53.0 dB	52.7 dB	51.2 dB	50.0 dB	51.3 dB	50.6 dB	50.4 dB	50.3 dB	49.4 dB	48.4 dB
ENOB (SINAD)	8.6 LSB	8.5 LSB	8.5 LSB	8.5 LSB	8.2 LSB	8.0 LSB	8.2 LSB	8.1 LSB	8.1 LSB	8.1 LSB	7.9 LSB	7.8 LSB
ENOB (SNR)	8.7 LSB	8.6 LSB	8.7 LSB	8.6 LSB	8.5 LSB	8.1 LSB	8.7 LSB	8.6 LSB	8.6 LSB	8.6 LSB	8.3 LSB	8.0 LSB

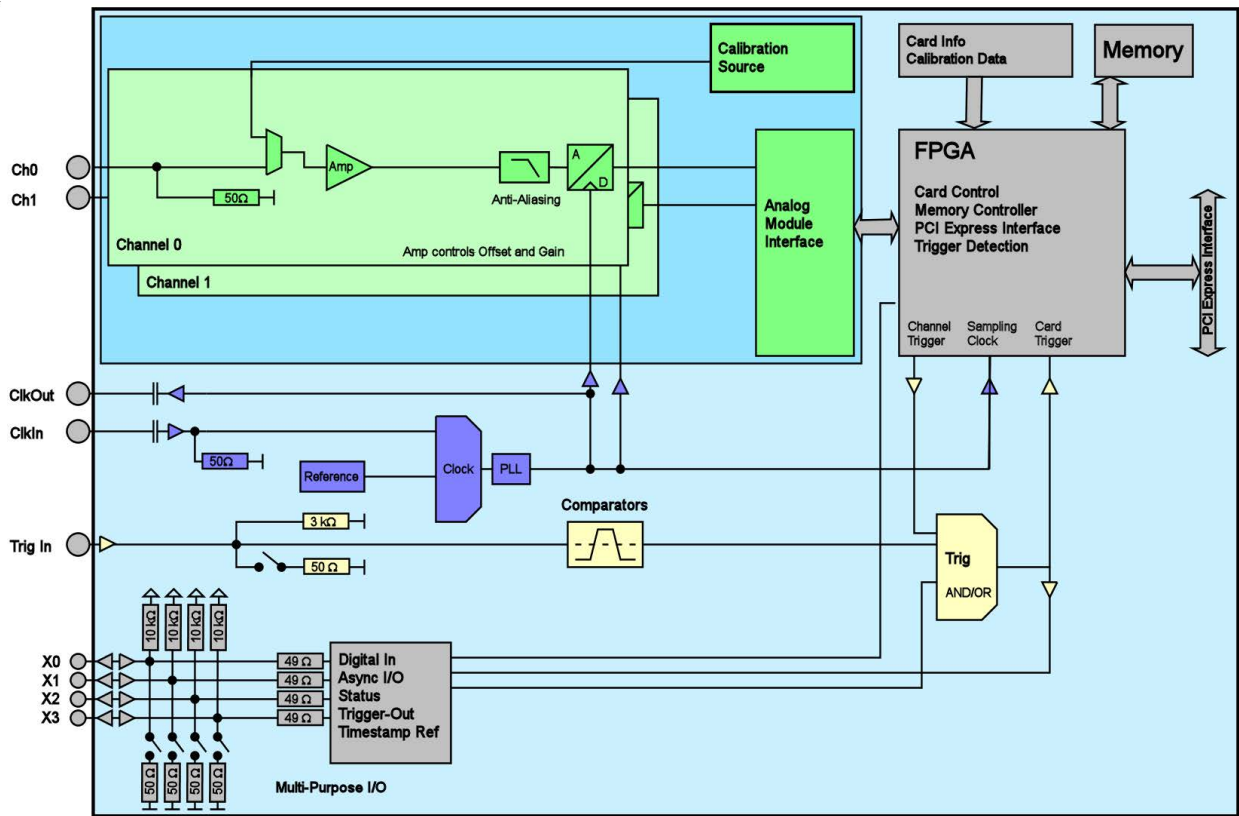
Dynamic parameters are measured at ±1 V input range (if no other range is stated) and 50Ω termination with the samplerate specified in the table. Measured parameters are averaged 20 times to get typical values. Test signal is a pure sine wave generated by a signal generator and a matching bandpass filter. Amplitude is >99% of FSR. SNR and RMS noise parameters may differ depending on the quality of the used PC. SNR = Signal to Noise Ratio, THD = Total Harmonic Distortion, SFDR = Spurious Free Dynamic Range, SINAD = Signal Noise and Distortion, ENOB = Effective Number of Bits.

RMS Noise Level (Zero Noise)

Input Range	M5i.3330-x16 and M5i.3337-x16 - 12 Bit 6.4 GS/s							
	±200 mV		±500 mV		±1		±2.5 V	
Voltage resolution (1 LSB)	97 µV		244 µV		488 µV		1.22 mV	
DC, fixed 50 Ω, typical	2.6 LSB	252 µV	2.6 LSB	634 µV	2.6 LSB	1.27 mV	2.5 LSB	3.05 mV

Input Range	M5i.3330-x16 and M5i.3337-x16 - 12 Bit 3.2 GS/s							
	±200 mV		±500 mV		±1		±2.5 V	
Voltage resolution (1 LSB)	97 µV		244 µV		488 µV		1.22 mV	
DC, fixed 50 Ω, typical	2.8 LSB	272 µV	2.4 LSB	586 µV	2.6 LSB	1.27 mV	2.6 LSB	3.17 mV

Hardware block diagram



Order Information

The card is delivered with 2 GSample on-board memory and supports standard acquisition (Scope), FIFO acquisition (streaming), Multiple Recording and Timestamps. Operating system drivers for Windows/Linux 32 bit and 64 bit, examples for C/C++, LabVIEW (Windows), MATLAB (Windows and Linux), IVI, .NET, Delphi, Java, Python, Julia and a Base license of the oscilloscope software SBench 6 are included.

Adapter cables are not included. Please order separately!

PCI Express x16

Order no.	Bandwidth	Standard mem	1 channel	2 channels
M5i.3330-x16	2 GHz	2 GSamples	6.4 GS/s	
M5i.3337-x16	2 GHz	2 GSamples	6.4 GS/s	3.2 GS/s

Options

Order no.	Option
M5i.xxx-MEM8GS	Optional memory extension to 8 GSamples (16 GBytes)

Services

Order no.	
Recal	Recalibration at Spectrum incl. calibration protocol

Standard Cables

for Connections	Length	Order no.				
		to BNC male	to BNC female	to SMA male	to SMA female	to SMB female
Analog/Clk/Trig/XIO	80 cm	Cab-3mA-9m-80	Cab-3mA-9f-80	Cab-3mA-3mA-80		Cab-3f-3mA-80
Analog/Clk/Trig/XIO	200 cm	Cab-3mA-9m-200	Cab-3mA-9f-200	Cab-3mA-3mA-200		Cab-3f-3mA-200
Probes (short)	5 cm		Cab-3mA-9f-5			
Information	The standard adapter cables are based on RG174 cables and have a nominal attenuation of 0.3 dB/m at 100 MHz and 0.5 dB/m at 250 MHz. For high speed signals we recommend the low loss cables series CHF					

Low Loss Cables

Order No.	Option
CHF-3mA-3mA-200	Low loss cables SMA male to SMA male 200 cm
CHF-3mA-9m-200	Low loss cables SMA male to BNC male 200 cm
Information	The low loss adapter cables are based on MF141 cables and have an attenuation of 0.3 dB/m at 500 MHz and 0.5 dB/m at 1.5 GHz. They are recommended for signal frequencies of 200 MHz and above.

Amplifiers

Order no.	Bandwidth	Connection	Input Impedance	Coupling	Amplification
SPA.1841 ⁽²⁾	2 GHz	SMA	50 Ohm	AC	x100 (40 dB)
SPA.1801 ⁽²⁾	2 GHz	SMA	50 Ohm	AC	x10 (20 dB)
SPA.1601 ⁽²⁾	500 MHz	BNC	50 Ohm	DC	x10 (20 dB)
Information	External Amplifiers with one channel, BNC/SMA female connections on input and output, manually adjustable offset, manually switchable settings. An external power supply for 100 to 240 VAC is included. Please be sure to order an adapter cable matching the amplifier connector type and matching the connector type for your A/D card input.				

Software SBench6

Order no.	
SBench6	Base version included in delivery. Supports standard mode for one card.
SBench6-Pro	Professional version for one card: FIFO mode, export/import, calculation functions
SBench6-Multi	Option multiple cards: Needs SBench6-Pro. Handles multiple synchronized cards in one system.
Volume Licenses	Please ask Spectrum for details.

Software Options

Order no.	
SPc-RServer	Remote Server Software Package - LAN remote access for M2i/M3i/M4i/M4x/M2p/M5i cards
SPc-SCAPP	Spectrum's CUDA Access for Parallel Processing - SDK for direct data transfer between Spectrum card and CUDA GPU. Includes RDMA activation and examples.

⁽¹⁾ : Just one of the options can be installed on a card at a time.

⁽²⁾ : Third party product with warranty differing from our export conditions. No volume rebate possible.

Technical changes and printing errors possible

SBench, digitizerNETBOX, generatorNETBOX and hybridNETBOX are registered trademarks of Spectrum Instrumentation GmbH. Microsoft, Visual C++, Windows, Windows 98, Windows NT, Window 2000, Windows XP, Windows Vista, Windows 7, Windows 8 and Windows 10 are trademarks/registered trademarks of Microsoft Corporation. LabVIEW, DASYLab, Diadem and LabWindows/CVI are trademarks/registered trademarks of National Instruments Corporation. MATLAB is a trademark/registered trademark of The Mathworks, Inc. Delphi and C++Builder are trademarks/registered trademarks of Embarcadero Technologies, Inc. Keysight VEE, VEE Pro and VEE OneLab are trademarks/registered trademarks of Keysight Technologies, Inc. FlexPro is a registered trademark of Weisang GmbH & Co. KG. IVI is a registered trademark of the IVI Foundation. Oracle and Java are registered trademarks of Oracle and/or its affiliates. Python is a trademark/registered trademark of Python Software Foundation. Julia is a trademark/registered trademark of Julia Computing, Inc. PCIe, PCI Express and PCI-X and PCI-SIG are trademarks of PCI-SIG. LXI is a registered trademark of the LXI Consortium. PICMG and CompactPCI are trademarks of the PCI Industrial Computation Manufacturers Group. Intel and Intel Core i3, Core i5, Core i7, Core i9 and Xeon are trademarks and/or registered trademarks of Intel Corporation. AMD, Opteron, Sempron, Phenom, FX, Ryzen and EPYC are trademarks and/or registered trademarks of Advanced Micro Devices. Arm is a trademark or registered trademark of Arm Limited (or its subsidiaries). NVIDIA, CUDA, GeForce, Quadro, Tesla and Jetson are trademarks/registered trademarks of NVIDIA Corporation.