

- Ground
- Power
- LED
- Internal Pin
- SWD Pin
- Digital Pin
- Analog Pin
- Other Pin
- Microcontroller's Port
- Default

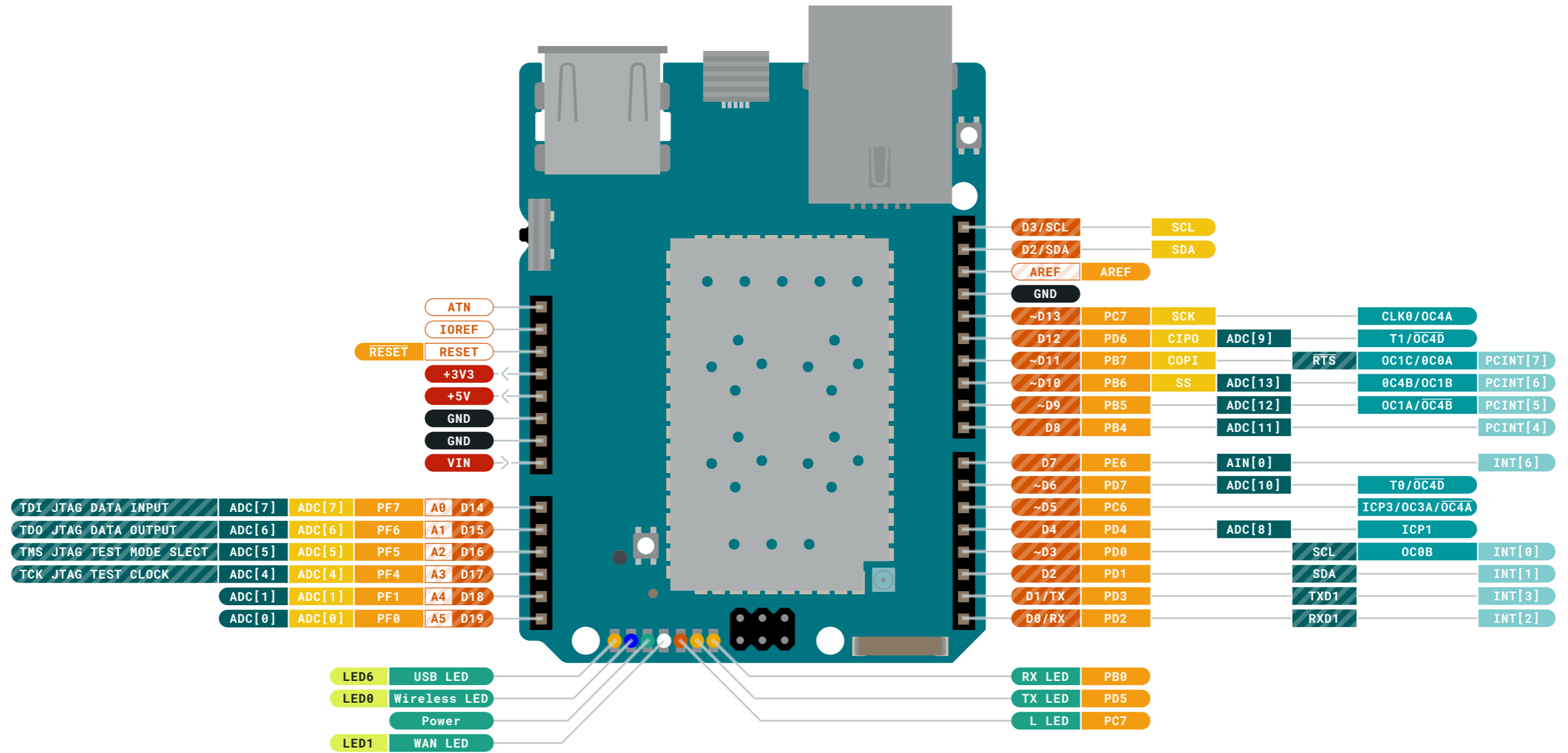
⚠️ MAXIMUM current per I/O pin is 20mA

⚠️ MAXIMUM current per +3.3V pin is 50mA

VIN 5V MAX input to the board.

NOTE: CIPO/COPI have previously been referred to as MISO/MOSI





- Ground
- Power
- LED
- Internal Pin
- SWD Pin
- Digital Pin
- Analog Pin
- Other Pin
- Microcontroller's Port
- Default
- Analog
- Communication
- Timer
- Extra Features
- Atheros AR9331

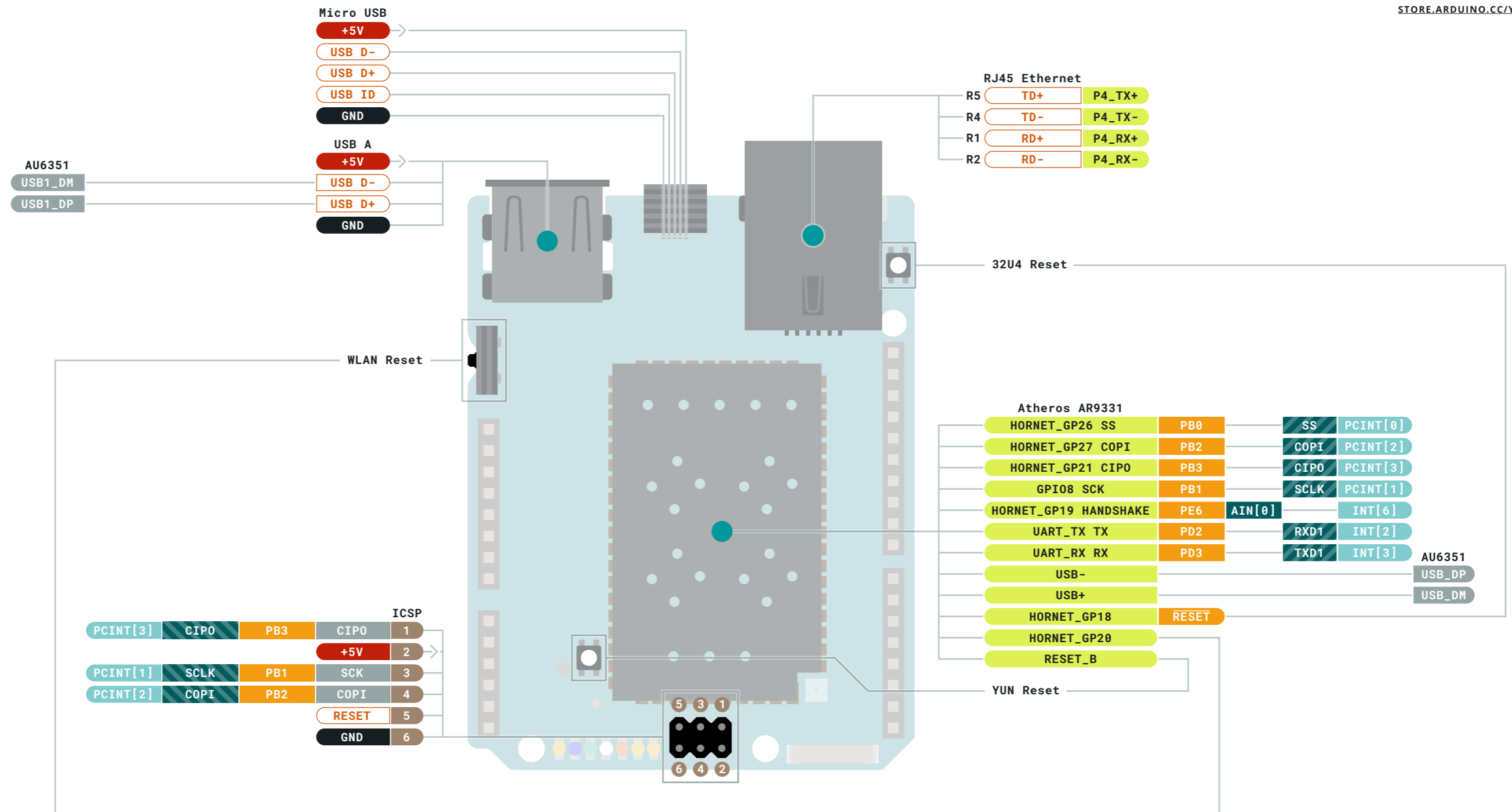
⚠️ MAXIMUM current per I/O pin is 20mA

⚠️ MAXIMUM current per +3.3V pin is 50mA

VIN 5V MAX input to the board.

NOTE: CIPO/COPI have previously been referred to as MISO/MOSI





- Ground
- Power
- LED
- Internal Pin
- SWD Pin
- Digital Pin
- Analog Pin
- Other Pin
- Microcontroller's Port
- Default
- Analog
- Communication
- Timer
- Extra Features
- Atheros AR9331

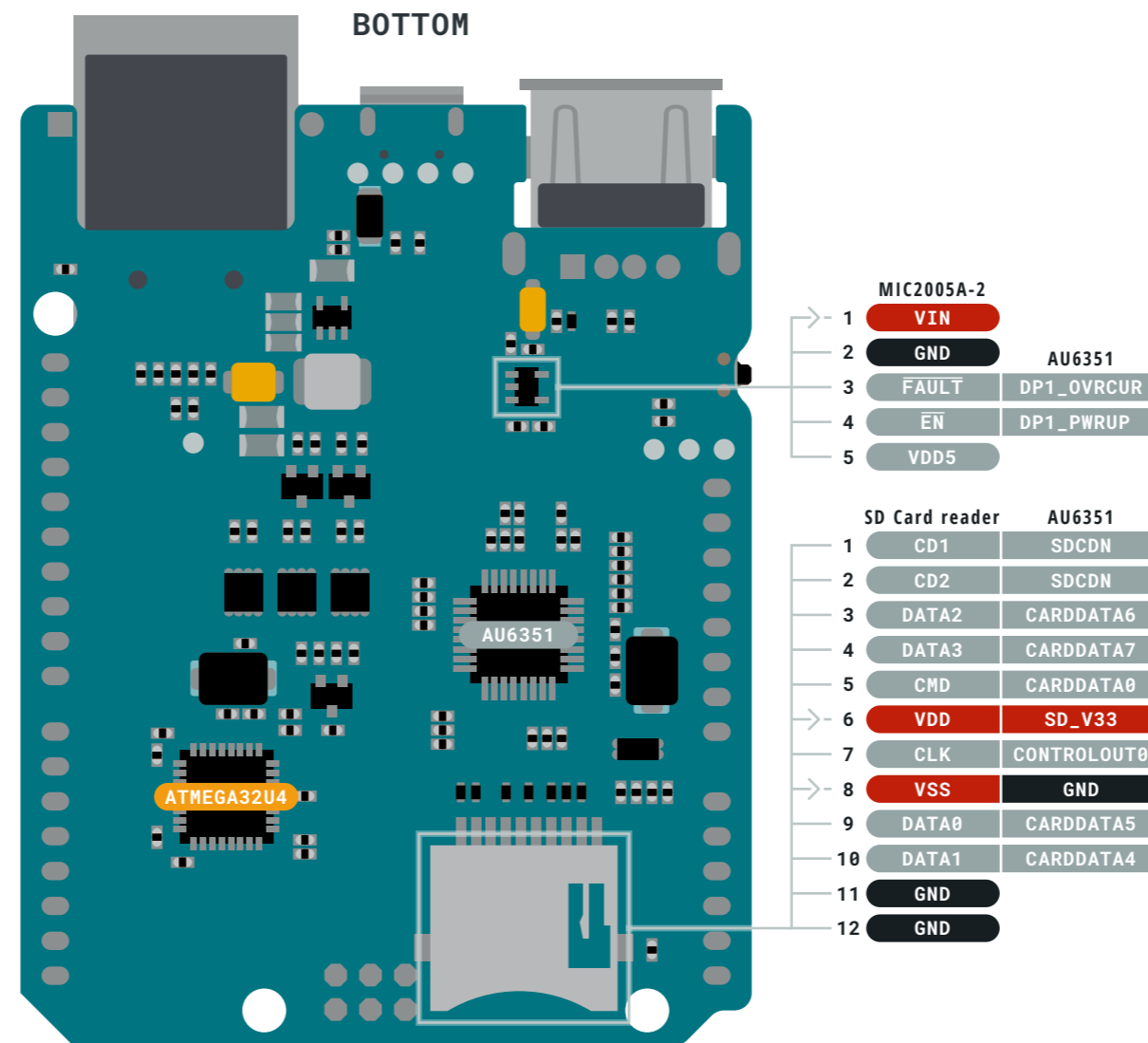
⚠️ MAXIMUM current per I/O pin is 20mA

⚠️ MAXIMUM current per +3.3V pin is 50mA

VIN 5V MAX input to the board.

NOTE: CIPO/COPI have previously been referred to as MISO/MOSI





- | | | |
|--------------|------------------------|----------------|
| Ground | Digital Pin | Analog |
| Power | Analog Pin | Communication |
| LED | Other Pin | Timer |
| Internal Pin | Microcontroller's Port | Extra Features |
| SWD Pin | Default | Atheros AR9331 |

MAXIMUM current per I/O pin is 20mA **VIN** 5V MAX input to the board.

MAXIMUM current per +3.3V pin is 50mA

