





# Outdoor Security Wi-Fi Camera

Model: Tapo C325WB

Smart. Secure. Easy.



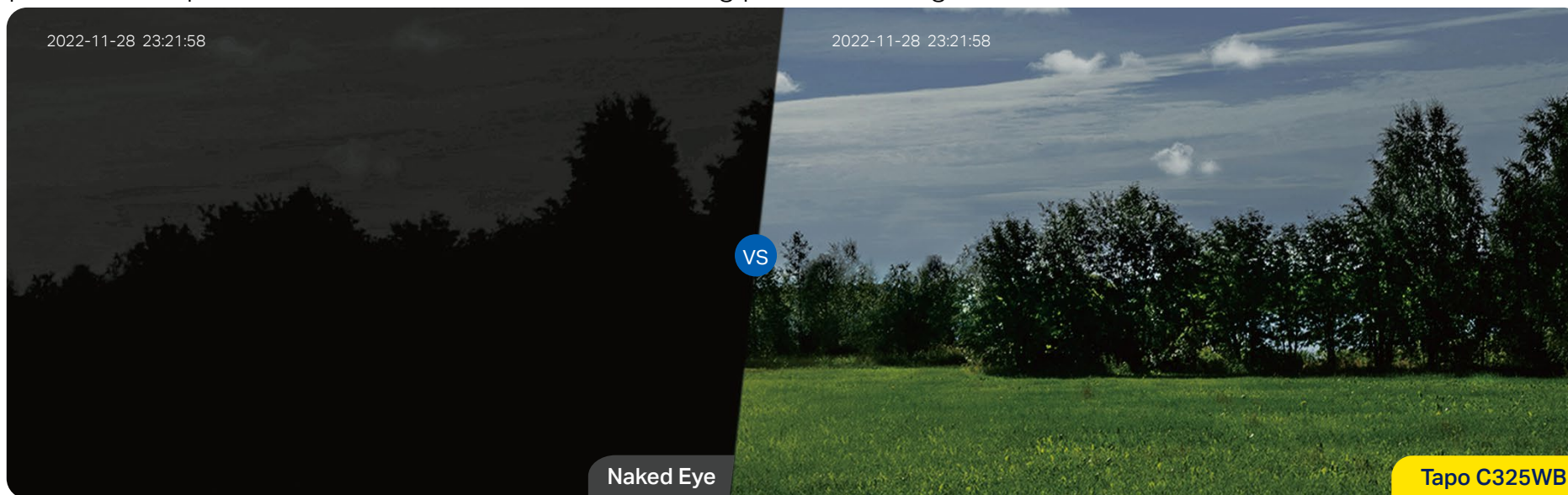
-  2K QHD Crystal Clear View
-  Person/Animal/Vehicle Detection\*
-  IP66 Water & Dust Resistant
-  Local microSD Storage (Up to 512 GB)†



## // Highlight

### ColorPro Night Vision

As Pro series products, Tapo C325WB offers more significant night vision performance than traditional color night vision cameras, capturing vivid colors under ultra low-light conditions even without any spotlights, Enjoy its professional protection with clearer view even during pitch-black nights.

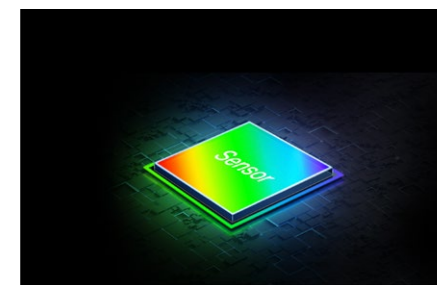
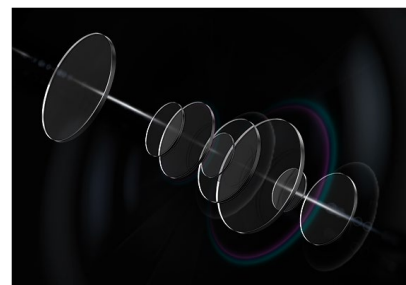


### F1.0 Super-Aperture Lens

Allows 4 × more light<sup>Δ</sup> to pass through the camera lens, making it ideal for ultra low-light conditions.

### 1/1.79" Large Sensor

Maximizes the utilization of perceived light with larger target surface and higher sensitivity to render more colors.



<sup>Δ</sup>Compared with cameras with F2.0 lens.

## // Highlight

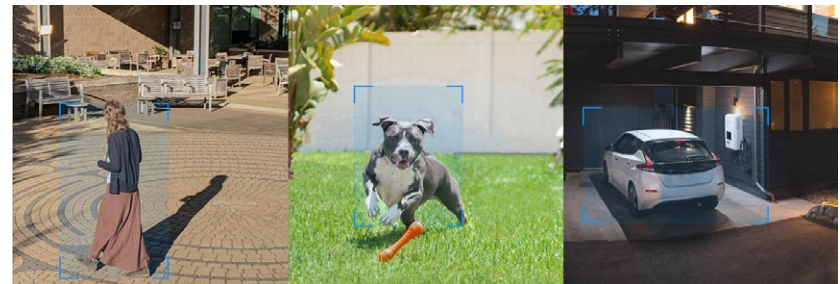
### 2K QHD Crystal Clear View

With a resolution of 2688 × 1520, Tapo C325WB reveals highly-detailed images.



### Person/Animal/Vehicle Detection\*

Smart AI identifies vehicles, people, and even animals, notifying you as needed\*.



## // Features



### Customizable Motion Detection

Set up activity zones or boundaries and receive instant notifications when motion is detected in your customized zones.



### IP66 Weatherproof

Helps Tapo C325WB perform well even in harsh environments with rain and dust.



### Wired/Wireless Networking

Connect the camera to your network through Ethernet or Wi-Fi for more flexible installation.



### Wide Field of View

A wide FOV provides a larger detection range covering more space, enabling you to focus on more vital areas.



### Local & Cloud Storage

Save recorded videos to a microSD card (up to 512 GB)<sup>†</sup> or use Tapo Care<sup>\*\*</sup> cloud storage service.



### Two-Way Audio

Enables communication through a built-in microphone and speaker.

<sup>†</sup>microSD card needs to be purchased separately. <sup>\*\*</sup>Subscribe for cloud storage at <http://www.tapo.com/tapocare/>

\* Tapo C325WB's animal detection currently supports cats and dogs. More types of animals will be supported in the future.

## // Specifications

### Camera

- Image Sensor: 1/1.79" Progressive Scan CMOS  
Lens: F/NO: 1.0±5%; Focal Length: 4.58mm±5%
- Resolution: 2K QHD (2688× 1520 px)
- Min. Illumination: Color: 0.0005 Lux, 0 Lux with Spotlights
- Field of View: 127° Diagonal

### Audio

- Audio Communication: 2-way audio
- Audio Input & Output: Built-in microphone and speaker

### Video

- Video Compression: H.264
- Frame Rate: 20fps
- Video Streaming: 2K QHD

### Activity Notifications

- Input Trigger:  
Motion detection, Person detection, Animal Detection, Vehicle Detection
- Output Notification: Notification, Snapshot(Tapo care),Clips(Tapo care).

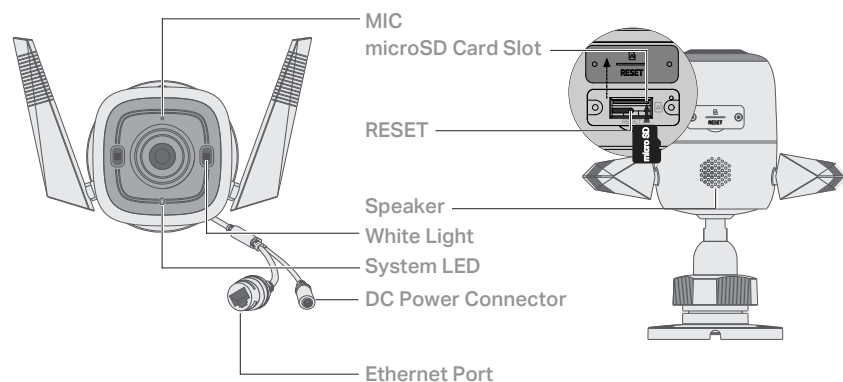
### Network

- Wireless Protocols: IEEE 802.11b/g/n, 2.4 GHz
- Frequency: 2.4 GHz
- Wireless Security: WPA/WPA2-PSK
- Security: 128 bit AES encryption with SSL/TLS
- Protocol: TCP/IP, ICMP, DNS, HTTPS, TCP, UDP

## // Specifications

### Hardware

- Button: RESET button
- Indicator LED: System LED
- Adapter Input: 100-240V, 50/60Hz, 0.3A
- Adapter Output: 9.0V/0.6A
- External Storage: microSD card slot (Supports up to 512 GB)<sup>†</sup>
- Dimensions (W x D x H): 5.85 x 5.43 x 3.56 in. (148.7 x 137.9 x 90.4 mm)



<sup>†</sup>microSD card needs to be purchased separately.

### Others

- Certification: CE, FCC, RoHS, RCM
- Package Contents:
  - Tapo C325WB Camera
  - DC Power Adapter
  - Mounting Anchors
  - Mounting Screws
  - Mounting Template
  - Waterproof Seal
  - Waterproof Cable Attachments
  - Quick Start Guide
- Operating Temperature: -20 °C ~45 °C (-4 °F ~113 °F)
- Storage Temperature: -40 °C ~60 °C (-40 °F ~140 °F)
- Operating Humidity: 10%~90%RH, Non-condensing
- Storage Humidity: 5%~90%RH, Non-condensing

Specifications are subject to change without notice. All brands and product names are trademarks or registered trademarks of their respective holders.  
Copyright ©2023 TP-Link Corporation Limited. All rights reserved.